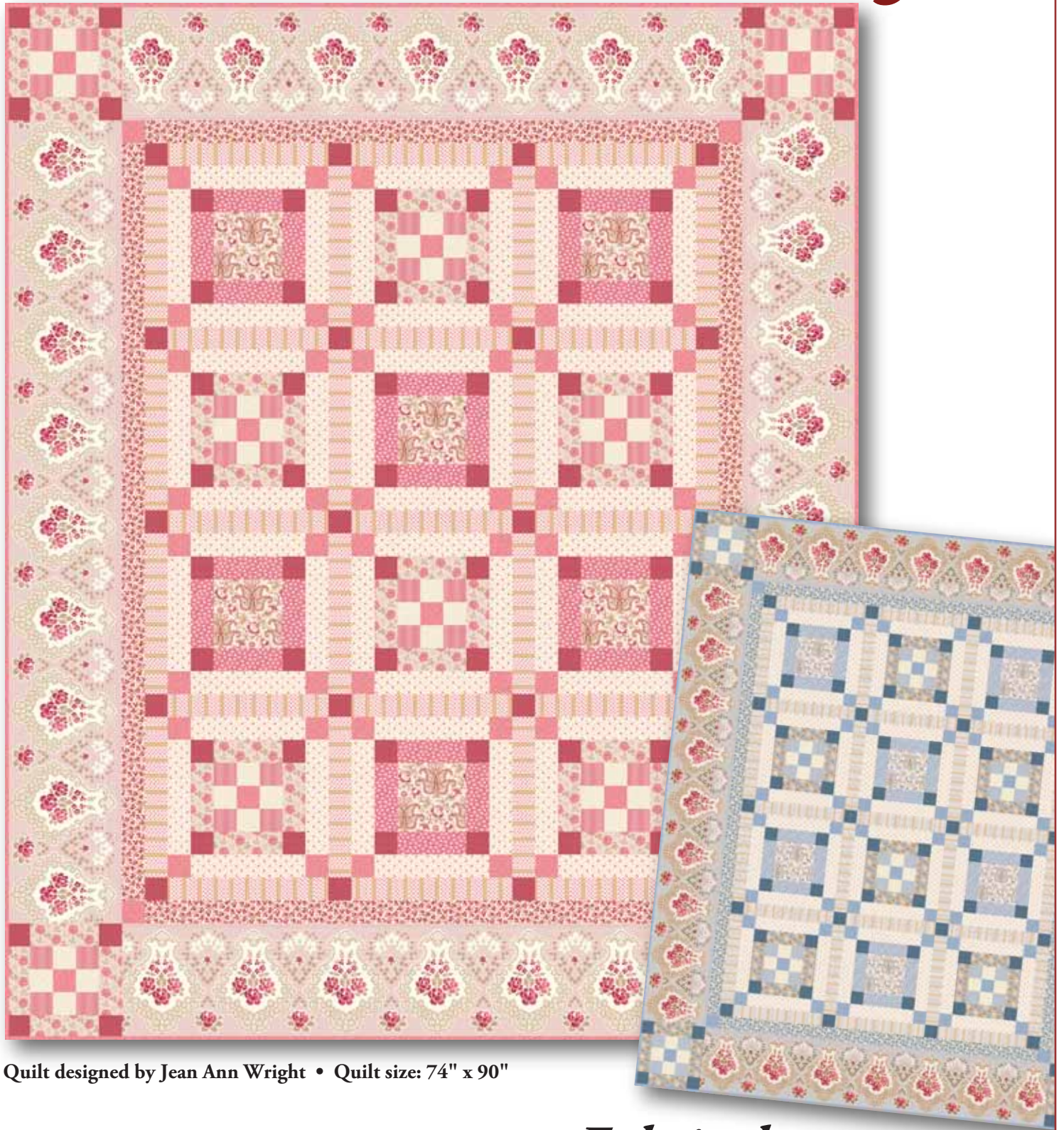


Chateau Chambrey



Quilt designed by Jean Ann Wright • Quilt size: 74" x 90"



makower uk®

1384 Broadway
New York, NY 10018
(800) 223-5678
www.andoverfabrics.com

Fabrics by
Renée Nanneman

Chateau Chambray Quilt

Introducing Andover Fabrics new collection: Chateau Chambray by Renée Nannemann
Quilt designed by Jean Ann Wright

Quilt finishes 74" x 90"
6 Block X: 14" x 14"
6 Block Y: 14" x 14"
4 Block Z: 10" x 10"

Romance is in the air! Softly colored flowers and subtle stripes are made more feminine with lacy details. Small stepping stone squares form diagonal lines across the surface of the quilt. Strip-pieced bands make the piecing quick and easy.

Fabric Requirements

| | | Yardage | Red | Blue |
|------------------|-------------------------|-----------------------|---------|---------|
| Fabric A | outer border | 2 $\frac{1}{8}$ yards | 5912-R | 5912-B |
| Fabric B | block X | $\frac{1}{4}$ yard | 5914-R | 5914-B |
| Fabric C | blocks Y & Z | $\frac{5}{8}$ yard | 5915-R | 5915-B |
| Fabric D | inner border | $\frac{1}{2}$ yard | 5916-R | 5916-B |
| Fabric E | block X | $\frac{3}{8}$ yard | 5917-R | 5917-B |
| Fabric F | sashing | 1 $\frac{1}{4}$ yards | 5918-R | 5918-B |
| Fabric G | all blocks | $\frac{3}{8}$ yard | 5919-R | 5919-B |
| Fabric H | blocks Y & Z | $\frac{3}{8}$ yard | 5919-RL | 5919-RL |
| *Fabric I | blocks Y & Z | 1 yard | 5920-R | 5920-B |
| Fabric J | blocks X & Y | 1 $\frac{1}{4}$ yards | 5921-R | 5921-B |
| Fabric K | all blocks | $\frac{5}{8}$ yard | 5922-R | 5922-B |
| Backing | | 5 $\frac{1}{2}$ yards | 5913-R | 5913-B |

*includes binding

Cutting Directions

Note: All measurements are cut sizes and include $\frac{1}{4}$ " seam allowances. Borders are cut the exact lengths required plus $\frac{1}{4}$ " seam allowances. WOF designates the width of fabric from selvedge to selvedge (approximately 42" wide).

- Fabric A** Cut (2) outer borders 10 $\frac{1}{2}$ " x 70 $\frac{1}{2}$ ", cut lengthwise
Cut (2) outer borders 10 $\frac{1}{2}$ " x 54 $\frac{1}{2}$ ", cut lengthwise
- Fabric B** Cut (2) strips 6 $\frac{1}{2}$ " x 21"
- Fabric C** Cut (3) strips 6 $\frac{1}{2}$ " x 21"
Cut (20) strips 2 $\frac{1}{2}$ " x 6 $\frac{1}{2}$ "
- Fabric D** Cut (2) inner borders 2 $\frac{1}{2}$ " x 66 $\frac{1}{2}$ ", cut crosswise and pieced
Cut (2) inner borders 2 $\frac{1}{2}$ " x 50 $\frac{1}{2}$ ", cut crosswise and pieced
- Fabric E** Cut (2) strips 6 $\frac{1}{2}$ " x 21"
Cut (4) strips 2 $\frac{1}{2}$ " x 21"
- Fabric F** Cut (31) sashes 2 $\frac{1}{2}$ " x 14 $\frac{1}{2}$ ", cut crosswise
- Fabric G** Cut (8) strips 2 $\frac{1}{2}$ " x 21"
Cut (4) squares 2 $\frac{1}{2}$ " x 2 $\frac{1}{2}$ " for inner border corners
- Fabric H** Cut (7) strips 2 $\frac{1}{2}$ " x 21"
- Fabric I** Cut (9) strips 2 $\frac{1}{2}$ " x WOF for binding
Cut (6) strips 2 $\frac{1}{2}$ " x 21"
- Fabric J** Cut (24) strips 2 $\frac{1}{2}$ " x 10 $\frac{1}{2}$ "
Cut (3) strips 10 $\frac{1}{2}$ " x 21"
- Fabric K** Cut (10) strips 2 $\frac{1}{2}$ " x 21"
Cut (20) squares 2 $\frac{1}{2}$ " x 2 $\frac{1}{2}$ " for pieced sashes
- Backing** Cut (2) panels 41" x 98", pieced to fit quilt top with overlap on all sides

Chateau Chamray Quilt

Making and Assembling the Quilt

1. Referring to the Band 1 diagram, sew Fabric G $2\frac{1}{2}$ " x 21" strips to opposite sides of a Fabric J $10\frac{1}{2}$ " x 21" strip. Press the seam allowances toward the center strip. Make 3 bands like this. From the bands, cut a total of 24 segments, each $2\frac{1}{2}$ " wide.

Sew Fabric K $2\frac{1}{2}$ " x 21" strips to opposite sides of a Fabric E $6\frac{1}{2}$ " x 21" strip (Band 2 diagram). Press seam allowances toward Fabric K strips. Make 2 bands. From the bands, cut a total of 12 segments, each $2\frac{1}{2}$ " wide.

Sew Fabric E strips to opposite sides of a Fabric B strip to make a band (Band 3 diagram). Press seam allowances toward the center strip. Make 2 bands. Cut a total of 6 segments, each $6\frac{1}{2}$ " wide.

2. Referring to the Block X diagram, sew segments from Band 2 to opposite sides of a Band 3 segment. Sew a Fabric J $2\frac{1}{2}$ " x $10\frac{1}{2}$ " strip to the top and bottom of the unit. Sew segments from Band 1 to the sides as shown to make a Block X. Make 6.

3. Referring to the Band 4, Band 5, and Band 6 diagrams, sew the appropriate fabric strips together to make the number of bands shown. Press seam allowances toward darker fabrics in all the bands. Cut each band into segments $2\frac{1}{2}$ " wide in the numbers listed.

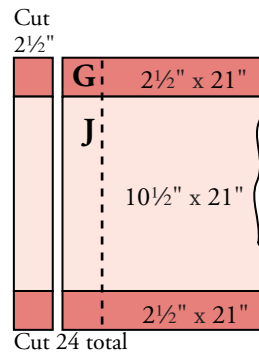
4. Join 2 segments from Band 5 and 1 segment from Band 6 to make a center nine-patch unit (Block Y diagram). The unit should measure $6\frac{1}{2}$ " square. Sew Fabric C $2\frac{1}{2}$ " x $6\frac{1}{2}$ " strips to the top and bottom. Sew segments from Band 4 to the sides. Sew Fabric J $2\frac{1}{2}$ " x $10\frac{1}{2}$ " strips to the top and bottom. Sew segments from Band 1 to the sides to make a Block Y. Make 6.

5. Referring to the Block Z diagram, join the segments from Bands 4, 5, and 6 with Fabric C $2\frac{1}{2}$ " x $6\frac{1}{2}$ " strips as you did for the center of Block Y. Make 4 Block Z.

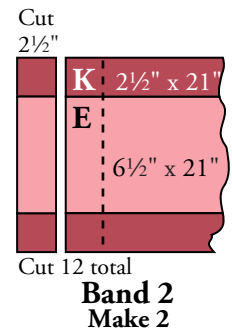
6. Referring to the Quilt Diagram, join 2 Block X and 1 Block Y with 4 Fabric F sashes to make Row 1. Make Row 3 just like this. Join 2 Block Y and 1 Block X with 4 sashes to make Row 2. Make Row 4 just like this.

7. To make a sash row, join 3 Fabric F sashes with 4 Fabric K $2\frac{1}{2}$ " squares. Make 5 sash rows like this. Join 5 sash rows with Rows 1, 2, 3, and 4.

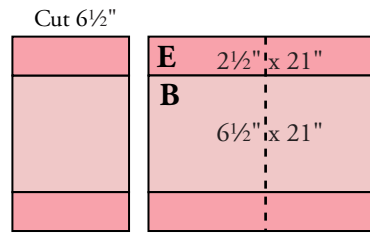
8. Sew Fabric D long borders to the sides. Sew Fabric G $2\frac{1}{2}$ " squares to ends of short Fabric D borders. Sew to the top and bottom. Likewise, sew Fabric A long borders to the sides. Sew Block Z's to the ends of short Fabric A borders and sew to the top and bottom.



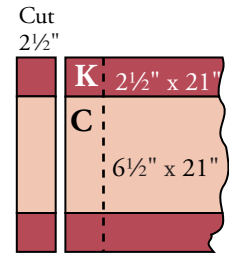
Band 1
Make 3



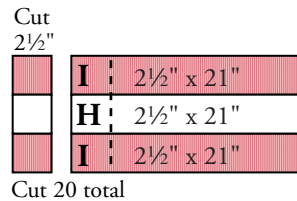
Band 2
Make 2



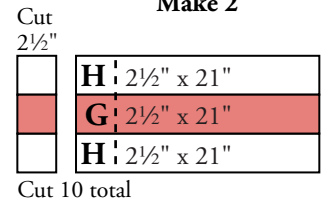
Band 3
Make 2



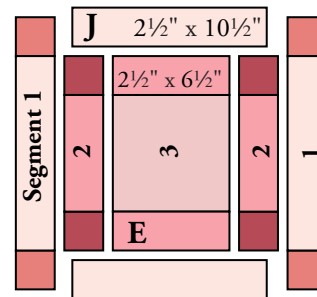
Band 4
Make 2



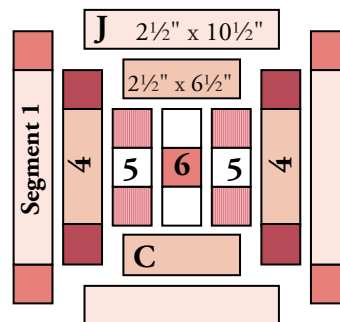
Band 5
Make 3



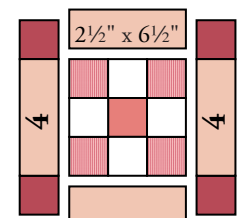
Band 6
Make 2



Block X
Make 6



Block Y
Make 6

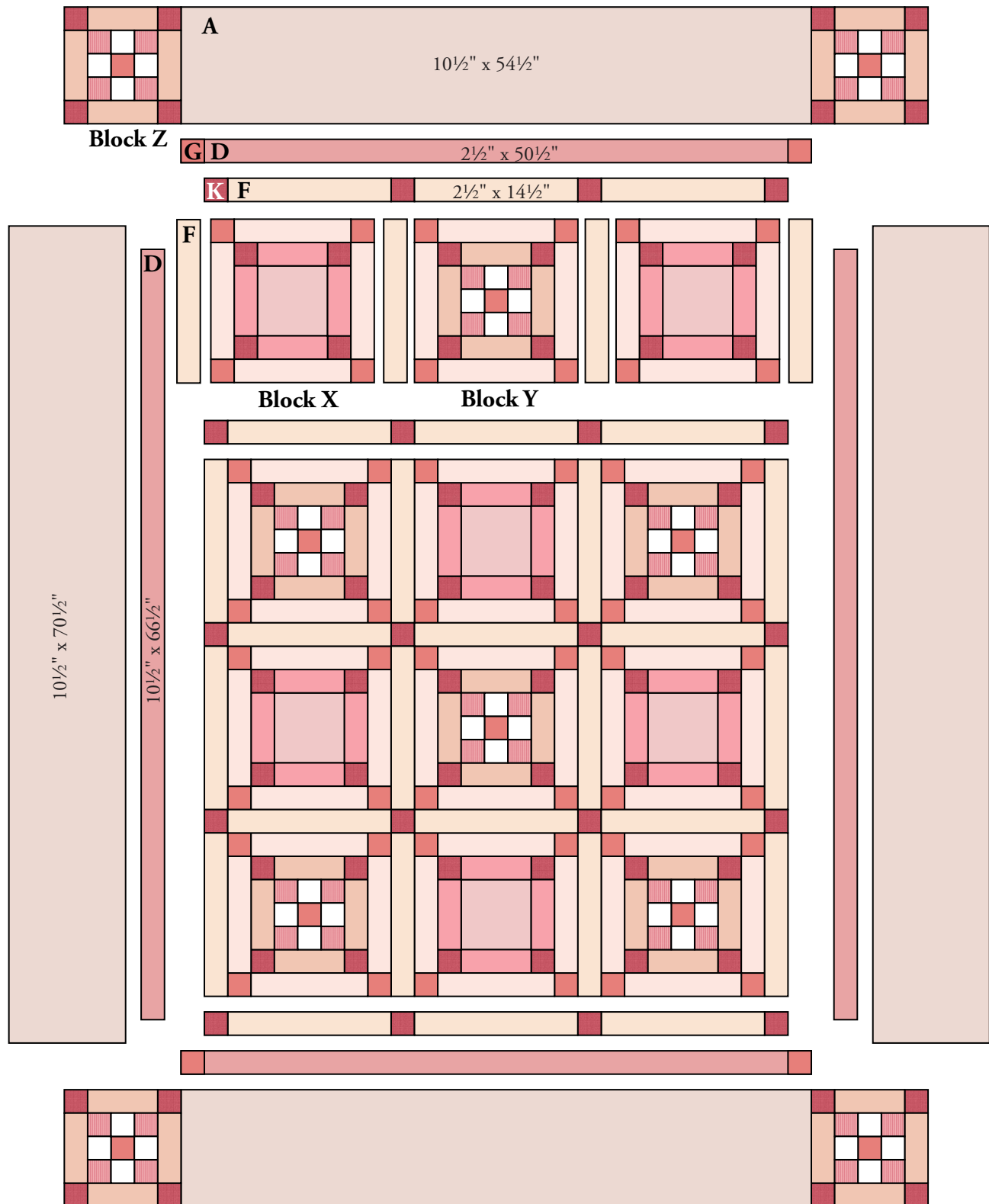


Block Z
Make 4

Chateau Chambray Quilt

Finishing the Quilt

9. Layer the quilt with batting and backing and baste. Quilt in the ditch around borders and block patches. Quilt around the printed motifs in the outer border and in the center of Block X's. Bind to finish the quilt.



Chateau Chambray

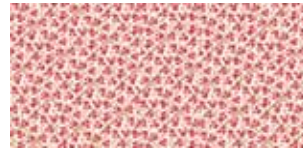
by Renée Nanneman



makower uk®



5912-R*



5916-R*



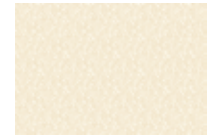
5917-R*



5918-R*



5919-R*



5919-RL*



5920-R*



5921-R*



5922-R*



5922-RL



3943-E



4261-R



4264-E



4265-R



4267-LN



5913-R*



5914-R*



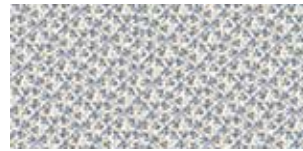
5915-R*



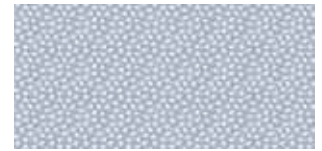
5915-RN



5912-B



5916-B



5917-B



5918-B



5919-B



5920-B



5921-B



5921-BN



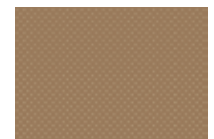
5922-B



5922-BN



3942-B



4064-N2



4066-B



4068-B



4263-N



5913-B



5914-B



5915-B